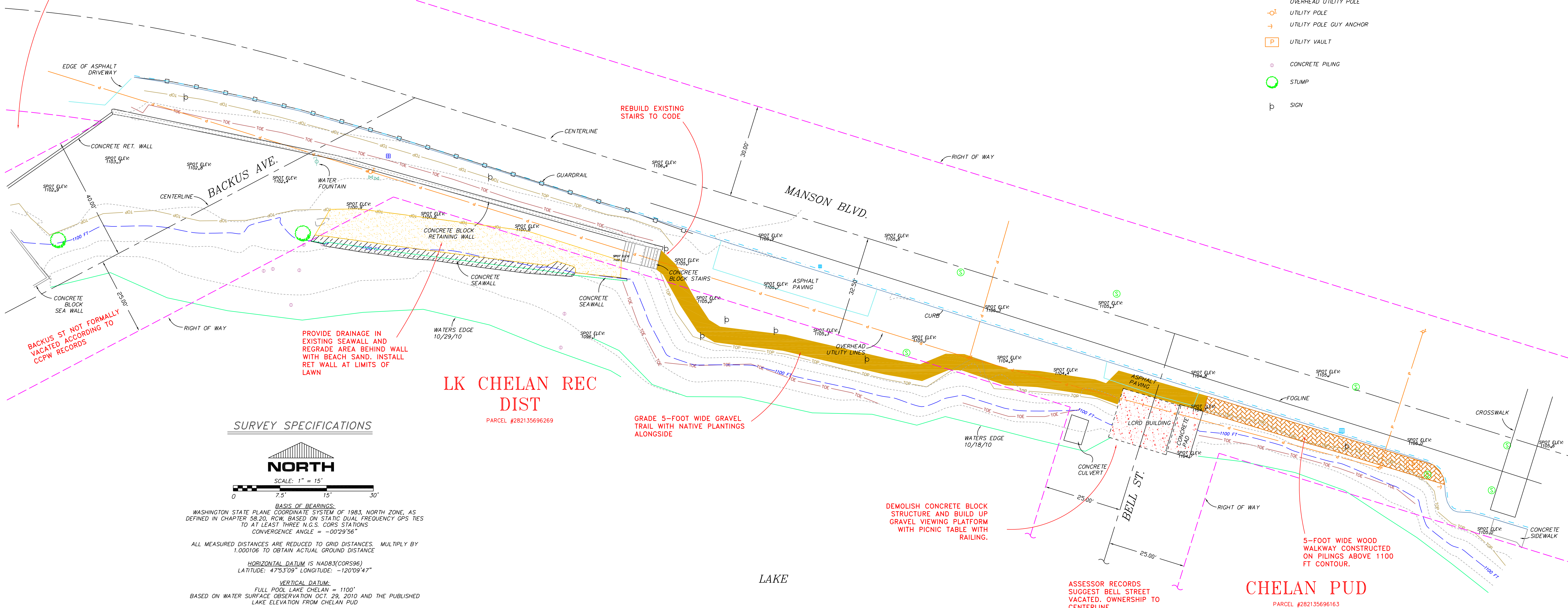


D.BUCKINGHAM

PARCEL #282135696378

LEGEND

- H2O VALVE
- CATCH BASIN
- H2O METER
- UTILITY MANHOLE
- OVERHEAD UTILITY POLE
- UTILITY POLE
- UTILITY POLE GUY ANCHOR
- UTILITY VAULT
- CONCRETE PILING
- STUMP
- SIGN



BACKUS ST NOT FORMALLY VACATED ACCORDING TO CCPW RECORDS

PROVIDE DRAINAGE IN EXISTING SEAWALL AND REGRADE AREA BEHIND WALL WITH BEACH SAND. INSTALL RET WALL AT LIMITS OF LAWN

REBUILD EXISTING STAIRS TO CODE

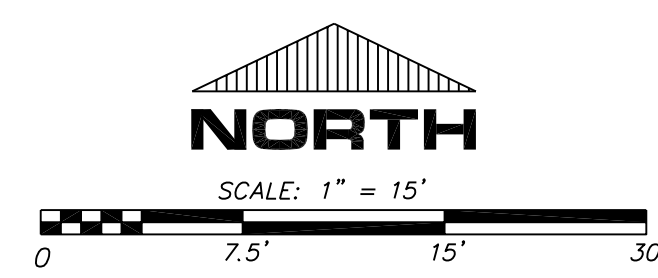
GRADE 5--FOOT WIDE GRAVEL TRAIL WITH NATIVE PLANTINGS ALONGSIDE

DEMOLISH CONCRETE BLOCK STRUCTURE AND BUILD UP GRAVEL VIEWING PLATFORM WITH PICNIC TABLE WITH RAILING.

5--FOOT WIDE WOOD WALKWAY CONSTRUCTED ON PILINGS ABOVE 1100 FT CONTOUR.

ASSESSOR RECORDS SUGGEST BELL STREET VACATED. OWNERSHIP TO CENTERLINE

SURVEY SPECIFICATIONS



NORTH
SCALE: 1" = 15'

BASIS OF BEARINGS:
WASHINGTON STATE PLANE COORDINATE SYSTEM OF 1983, NORTH ZONE, AS DEFINED IN CHAPTER 58.20, RCW, BASED ON STATIC DUAL FREQUENCY GPS TIES TO AT LEAST THREE N.G.S. CORS STATIONS
CONVERGENCE ANGLE = -00°29'56"

ALL MEASURED DISTANCES ARE REDUCED TO GRID DISTANCES. MULTIPLY BY 1.000106 TO OBTAIN ACTUAL GROUND DISTANCE

HORIZONTAL DATUM IS NAD83(CORS96)
LATITUDE: 47°53'09" LONGITUDE: -120°09'47"

VERTICAL DATUM:
FULL POOL LAKE CHELAN = 1100'
BASED ON WATER SURFACE OBSERVATION OCT. 29, 2010 AND THE PUBLISHED LAKE ELEVATION FROM CHELAN PUD

CONTOUR INTERVAL = 2 FOOT

BOUNDARIES SHOWN ON THIS MAP HAVE BEEN RECONSTRUCTED FROM CHELAN COUNTY RIGHT OF WAY PLANS FOR C.R.P. 572.

EQUIPMENT:
TOPCON HIPER+ AND GB500 GPS RECEIVERS WITH PACIFIC CREST RADIO MODEM AND A TDS RECON400 DATA COLLECTION SYSTEM.

PROCEDURES:
REAL TIME KINEMATIC GPS SURVEY WITH DOUBLE OBSERVATION OF NEW AND EXISTING MONUMENTATION WITH AN APPROXIMATE PRECISION OF ±0.06 FEET OR BETTER.

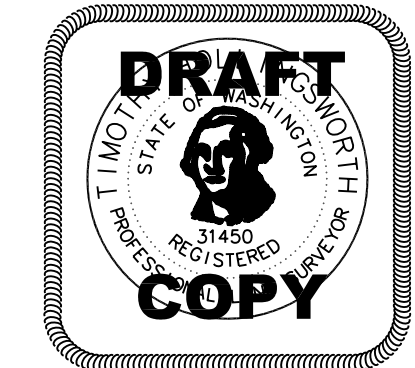
SURVEY DATE:
NOVEMBER 23, 2005

LK CHELAN REC DIST

PARCEL #282135696269

CHELAN PUD

PARCEL #282135696163



Pinnacle Surveying
Tim Hollingsworth, PLS

601 W. Woodin Ave., P.O. Box 1107 - Chelan Washington, 98816
509.682.2266 - holly@pinnacle-surveying.com

DRAWN BY: AW	LAYOUT: TOPO
DATE: 12-17-10	FILE NO: 210053-TOPO
SCALE: 1"=15'	JOB NO: 210053

MANSON PARKS DEPARTMENT

TOPOGRAPHIC MAP

"OLD SWIMMING HOLE"

SHT 1 OF 1